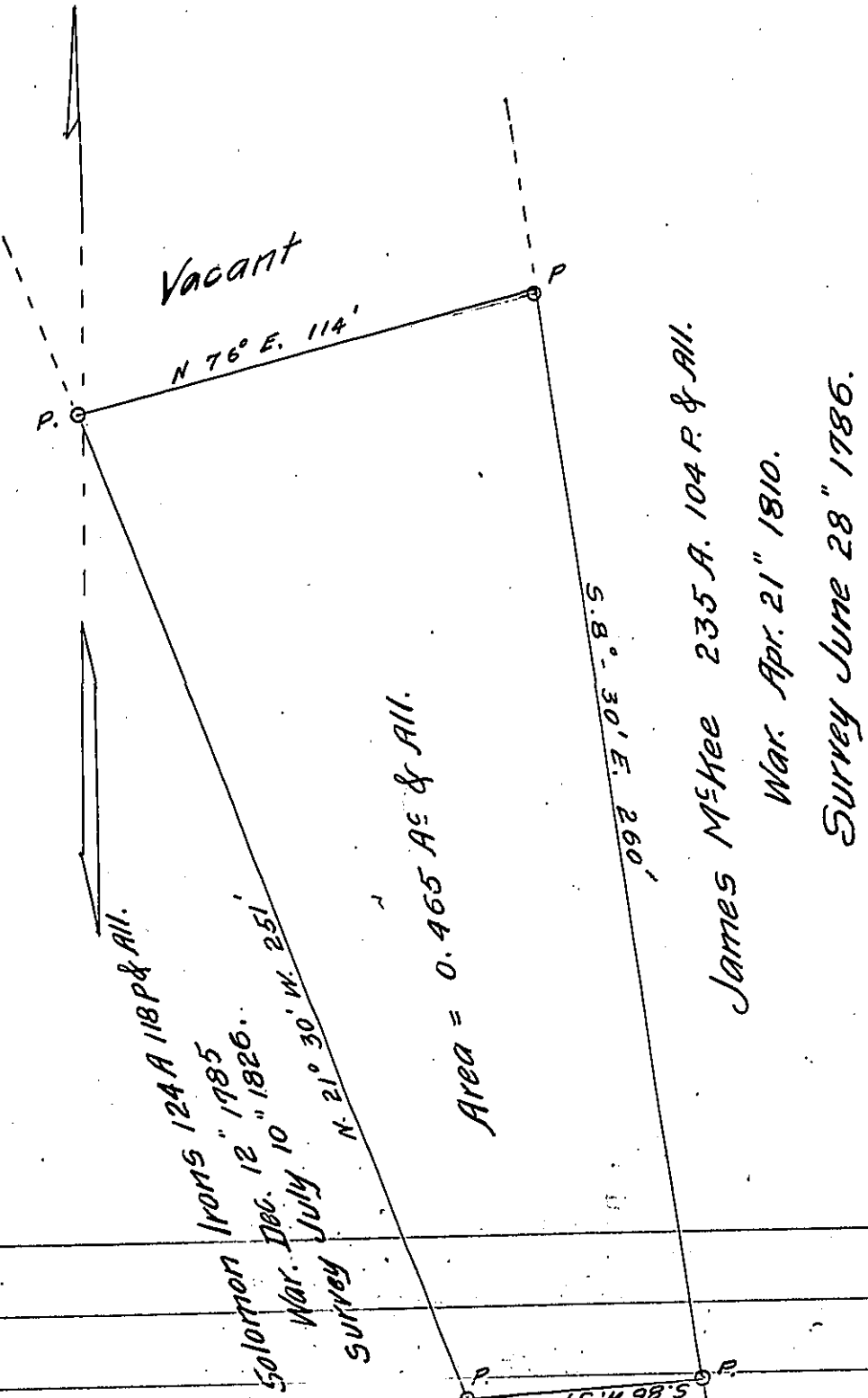


Hopewell →
BEAVER
✓



A Draft of a tract of land situated in the ~~Township~~ ^{Borough} of Woodlawn
 and County of Beaver, containing 0.465 acres & All. ~~acres~~
~~perches and allowance of six per cent. for roads, etc.~~

Surveyed the Twentieth day of May 1910, in pursuance of a
 warrant granted to Price Smager dated the Third day of May 1910.

To Hon. Henry Houck
 Secretary of Internal Affairs }

Michael Baker
 County Surveyor.

IN TESTIMONY that the above is a copy of the original remaining on file in
 the Department of Internal Affairs of Pennsylvania, made
 conformably to an Act of Assembly approved the 16th day of
 February, 1833, I have hereunto set my Hand and caused
 the Seal of said Department to be affixed at Harrisburg,
 this first day of March 1911.

Henry Houck
 Secretary of Internal Affairs.